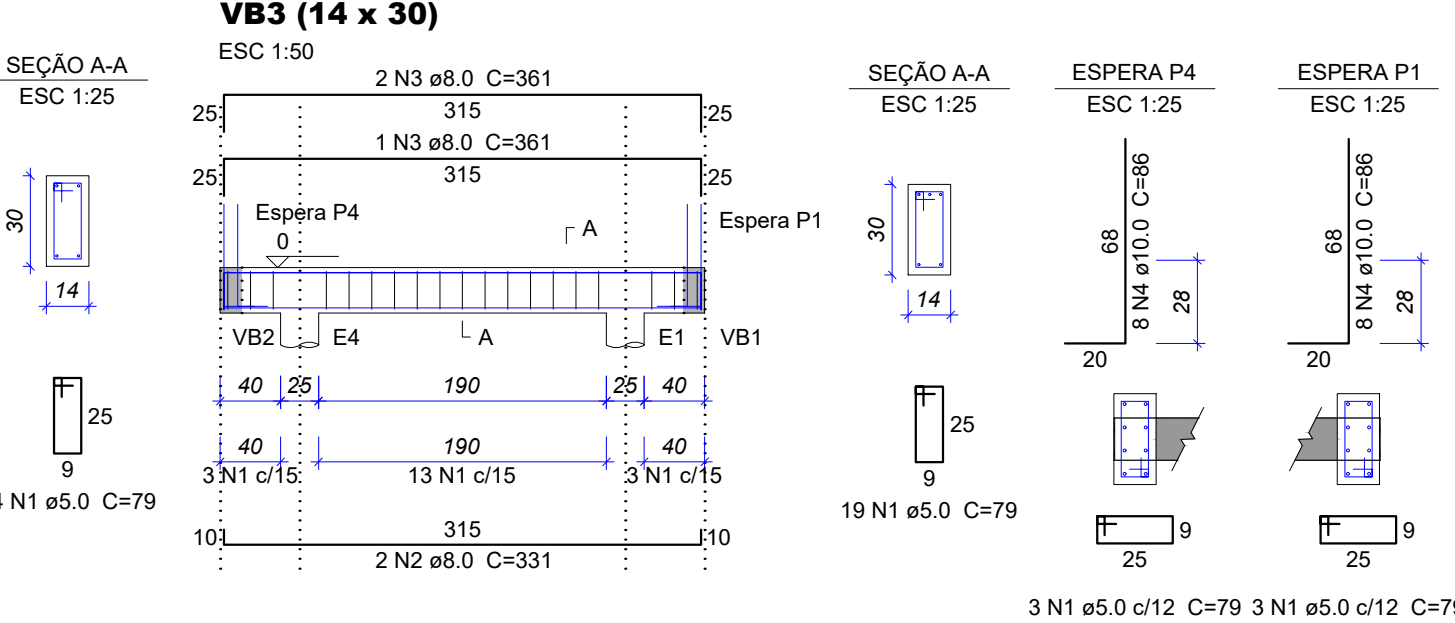
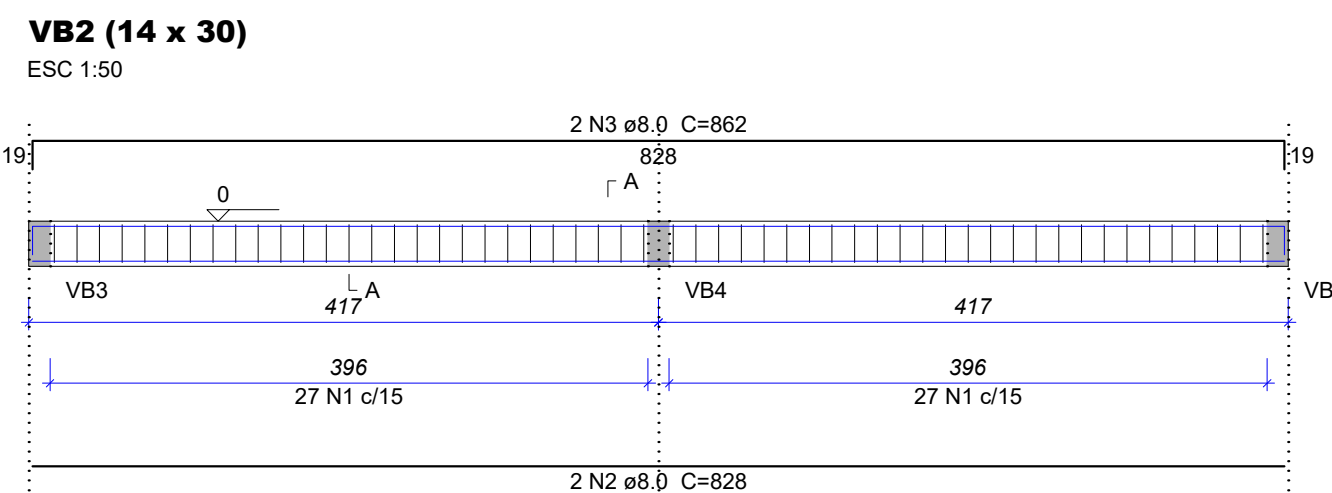
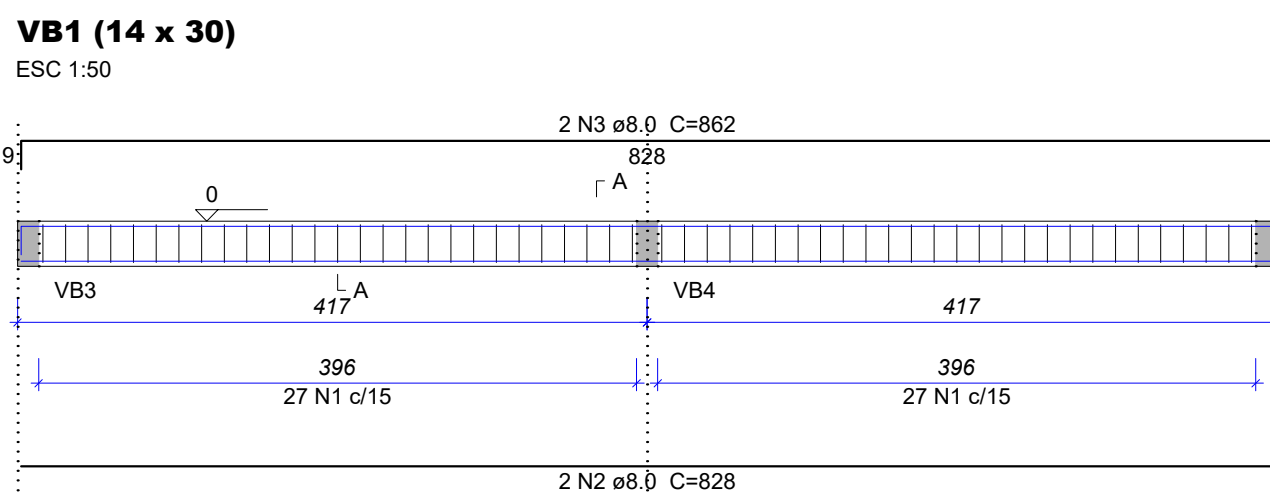
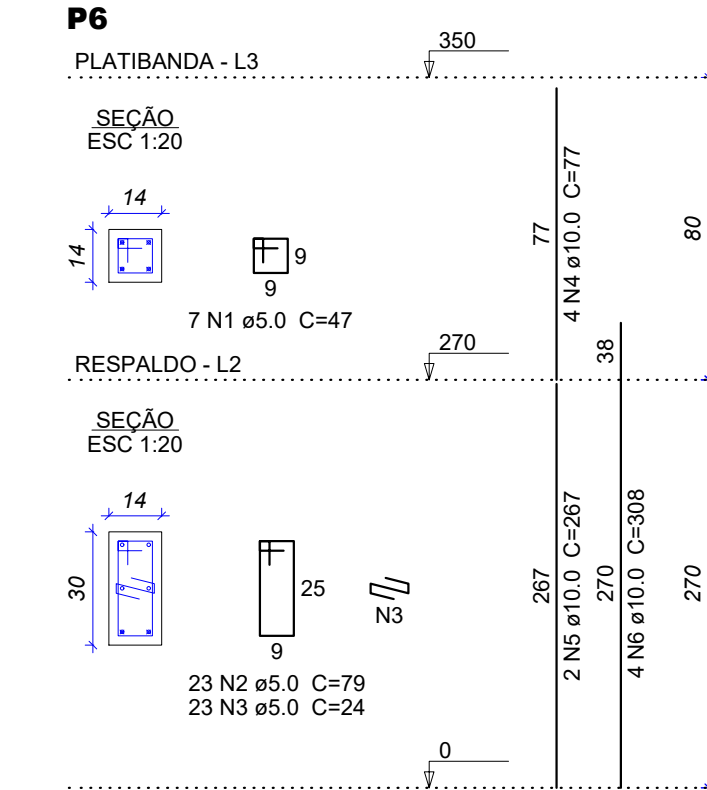
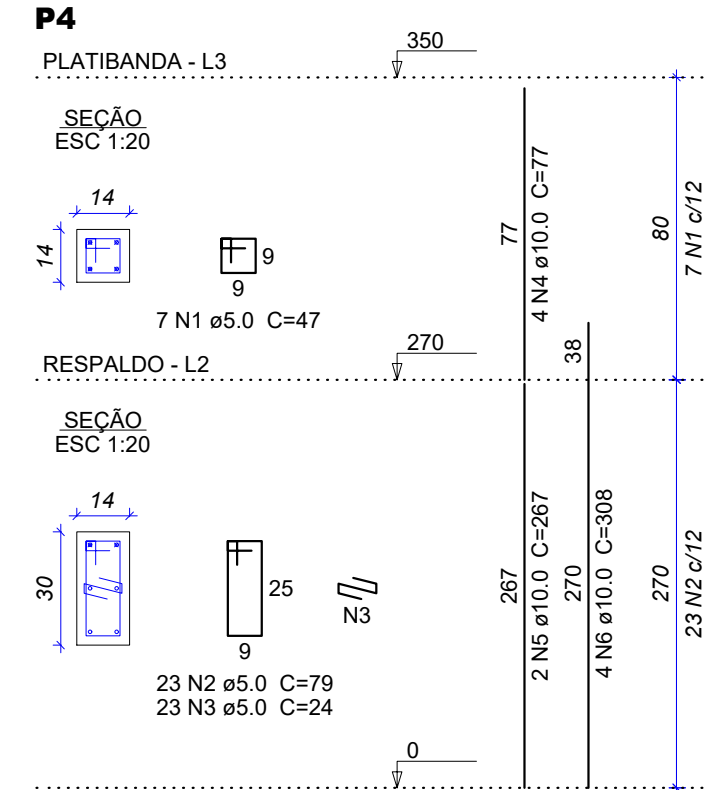
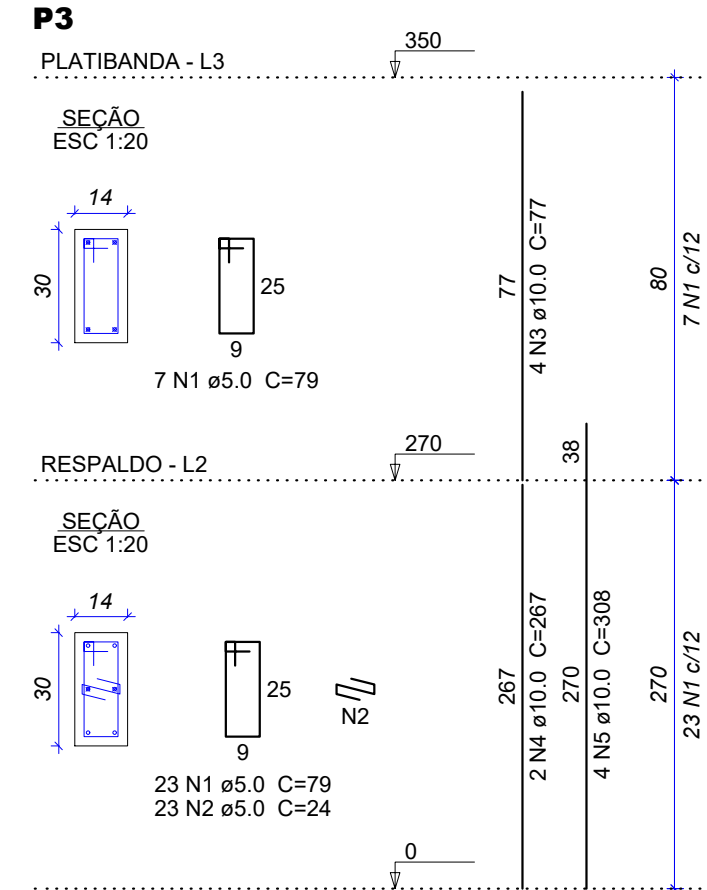
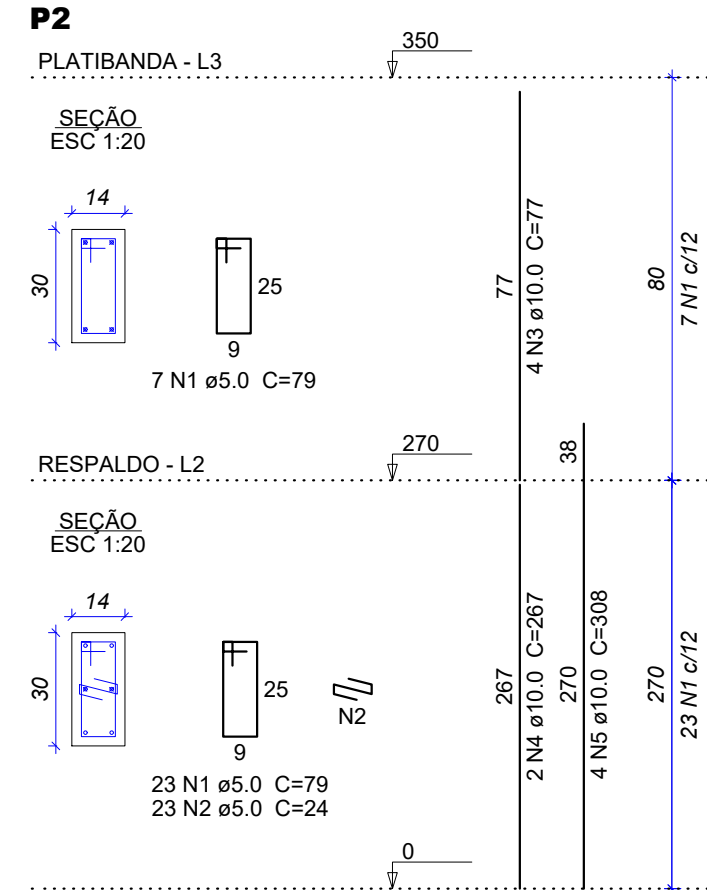
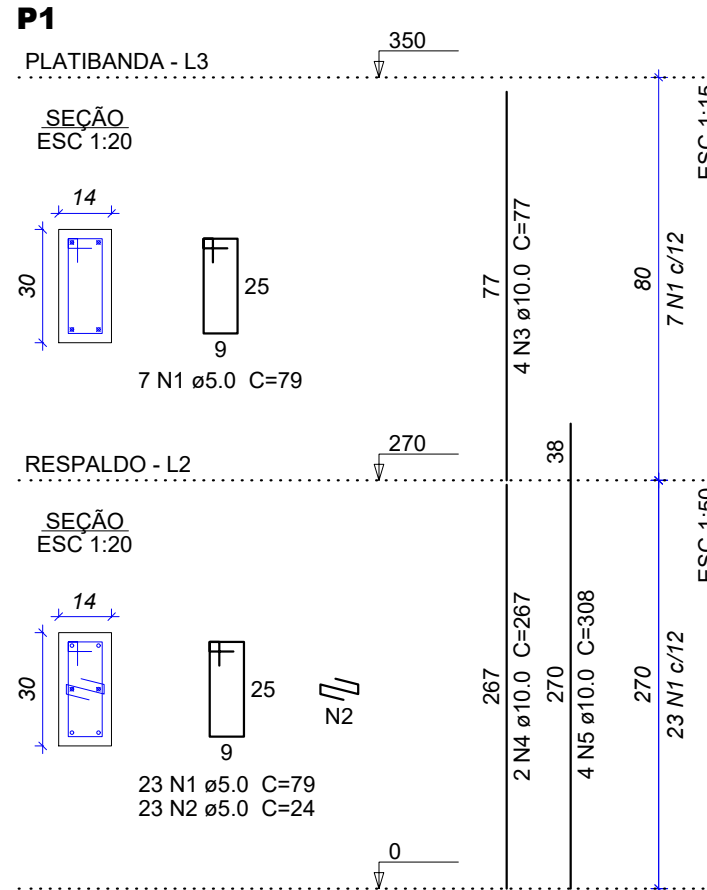
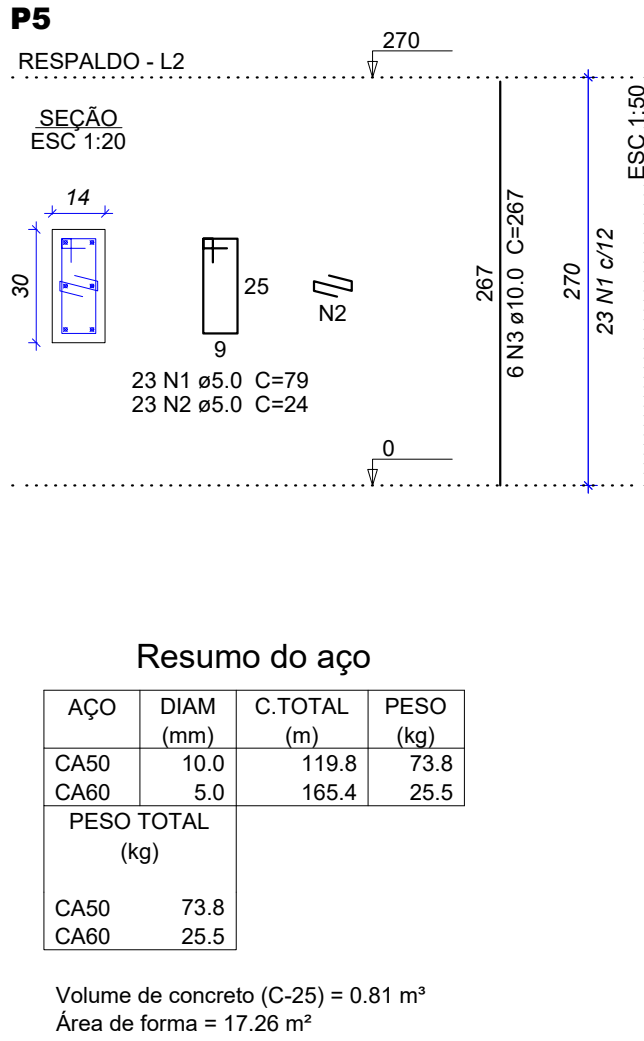


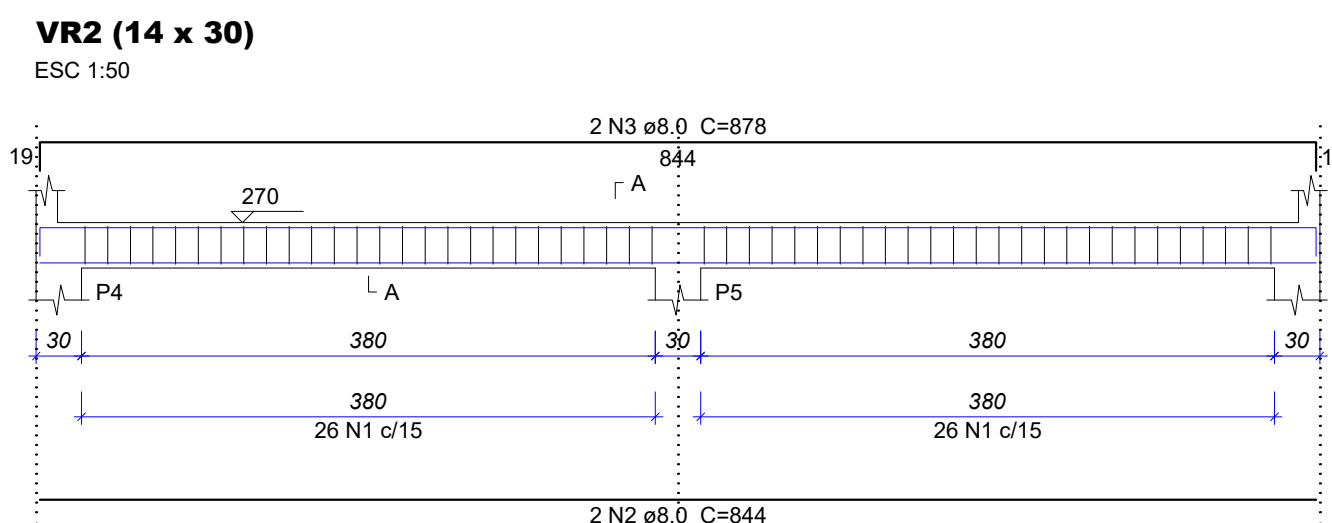
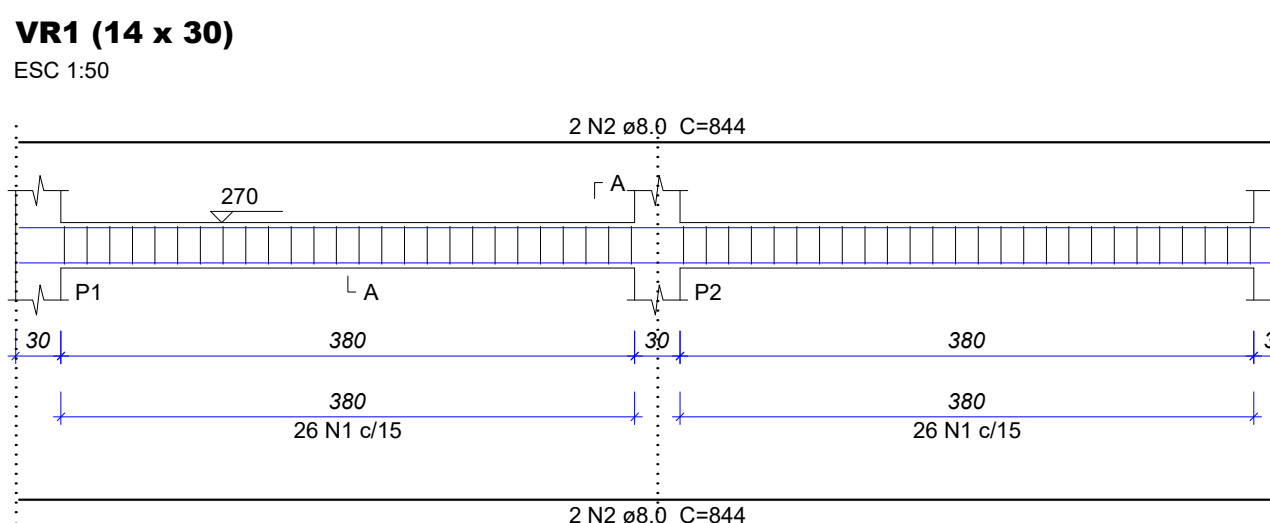
Relação do aço						
ELEMENTO	AÇO	N	DIAM (mm)	QUANT	C.UNIT (cm)	C.TOTAL (cm)
P1	CA60	1	5.0	30	79	2370
	CA60	2	5.0	23	24	552
	CA50	3	10.0	4	77	308
	CA50	4	10.0	2	267	534
	CA50	5	10.0	4	308	1232
P2	CA60	1	5.0	30	79	2370
	CA60	2	5.0	23	24	552
	CA50	3	10.0	4	77	308
	CA50	4	10.0	2	267	534
	CA50	5	10.0	4	308	1232
P3	CA60	1	5.0	30	79	2370
	CA60	2	5.0	23	24	552
	CA50	3	10.0	4	77	308
	CA50	4	10.0	2	267	534
	CA50	5	10.0	4	308	1232
P4	CA60	1	5.0	7	47	329
	CA60	2	5.0	23	79	1817
	CA60	3	5.0	23	24	552
	CA50	4	10.0	4	77	308
	CA50	5	10.0	2	267	534
P6	CA50	6	10.0	4	308	1232
	CA60	1	5.0	7	47	329
	CA60	2	5.0	23	79	1817
	CA60	3	5.0	23	24	552
	CA50	4	10.0	4	77	308
respaldo P5	CA50	5	10.0	2	267	534
	CA50	6	10.0	4	308	1232
	CA60	1	5.0	23	79	1817
	CA60	2	5.0	23	24	552
	CA50	3	10.0	6	267	1602



Relação do aço						
ELEMENTO	AÇO	N	DIAM (mm)	QUANT	C.UNIT (cm)	C.TOTAL (cm)
VB1	CA60	1	5.0	54	79	4266
	CA50	2	8.0	2	828	1656
	CA50	3	8.0	2	862	1724
VB2	CA60	1	5.0	54	79	4266
	CA50	2	8.0	2	828	1656
	CA50	3	8.0	2	862	1724
VB3	CA60	1	5.0	25	79	1975
	CA50	2	8.0	2	331	662
	CA50	3	8.0	3	361	1083
VB4	CA50	4	10.0	16	86	1376
	CA60	1	5.0	25	79	1975
	CA50	2	8.0	2	331	662
VB5	CA50	3	8.0	1	155	155
	CA50	4	8.0	3	361	1083
	CA50	5	10.0	16	86	1376
	CA60	1	5.0	25	79	1975
	CA50	2	8.0	2	331	662
	CA50	3	8.0	3	361	1083
	CA50	4	10.0	16	86	1376

Resumo do aço			
AÇO	DIAM (mm)	C.TOTAL (m)	PESO (kg)
CA50	8.0	121.5	47.9
CA50	10.0	41.3	25.5
CA60	5.0	144.6	22.3
PESO TOTAL (kg)			
CA50	73.4		
CA60	22.3		

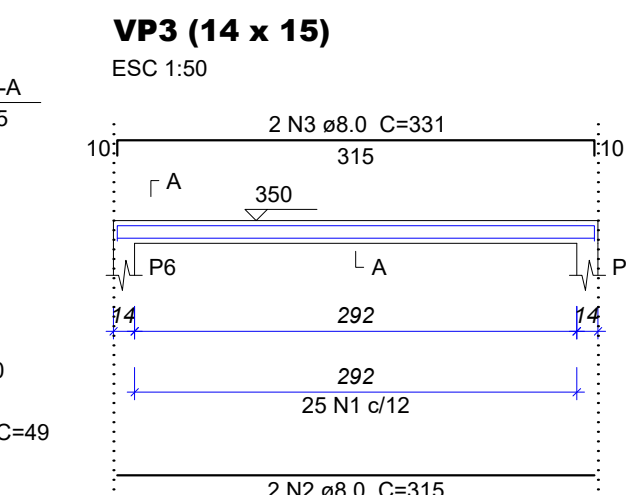
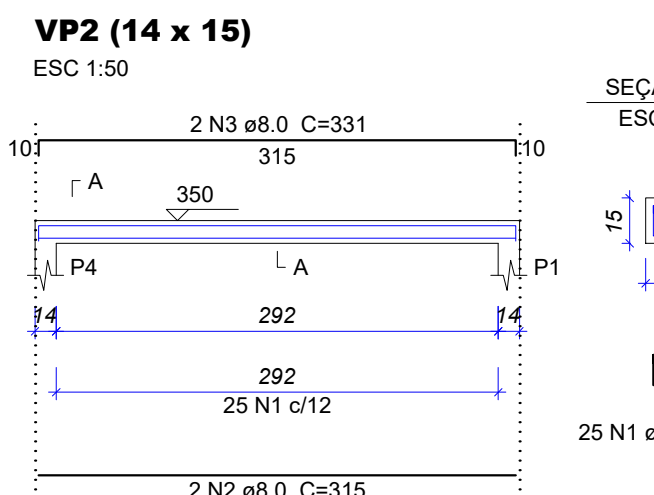
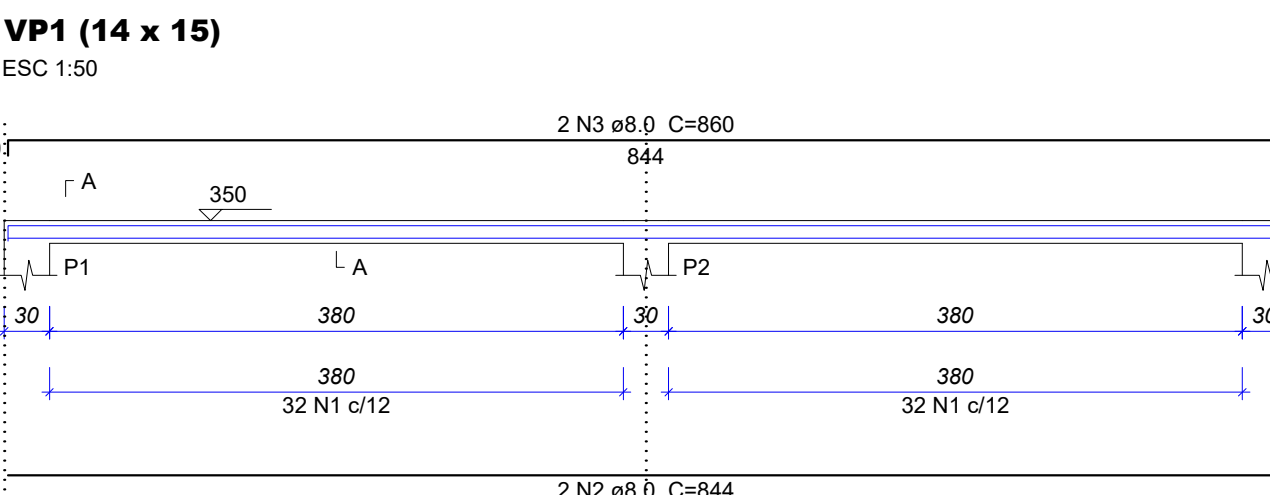
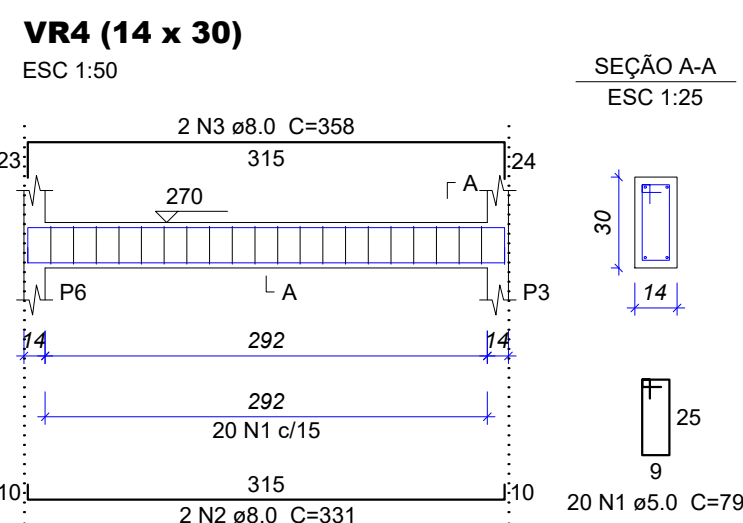
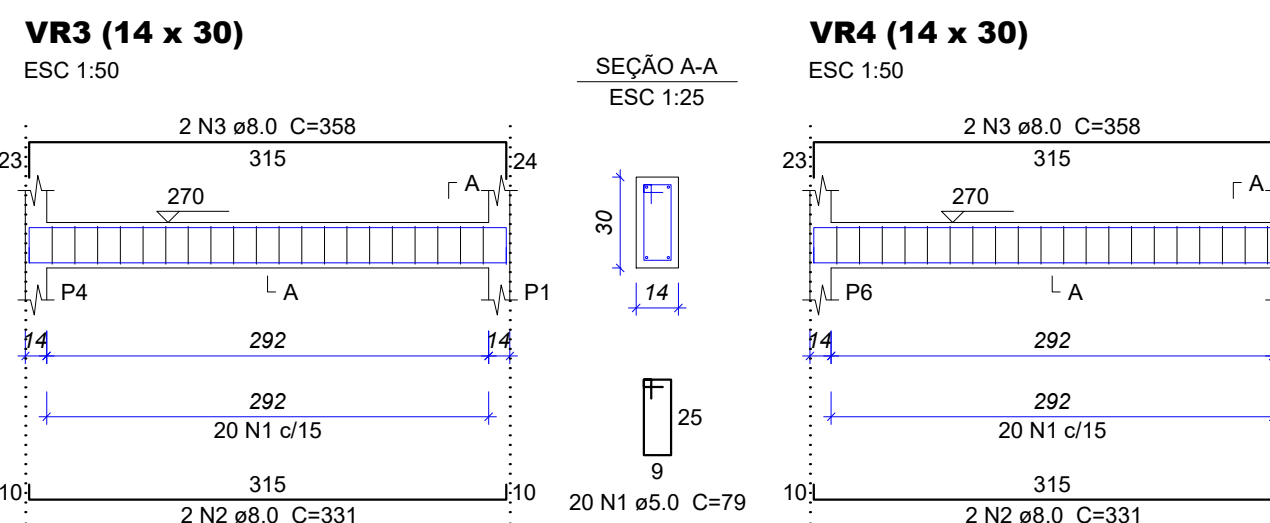
Volume de concreto (C-25) = 1.09 m³
Área de forma = 19.13 m²



Relação do aço						
ELEMENTO	AÇO	N	DIAM (mm)	QUANT	C.UNIT (cm)	C.TOTAL (cm)
VR1	CA60	1	5.0	52	79	4108
	CA50	2	8.0	4	844	3376
	CA60	1	5.0	52	79	4108
VR2	CA50	2	8.0	2	844	1688
	CA50	3	8.0	2	878	1756
	CA60	1	5.0	20	79	1580
VR3	CA50	2	8.0	2	331	662
	CA50	3	8.0	2	358	716
	CA60	1	5.0	20	79	1580
VR4	CA50	2	8.0	2	331	662
	CA50	3	8.0	2	358	716

Resumo do aço			
AÇO	DIAM (mm)	C.TOTAL (m)	PESO (kg)
CA50	8.0	95.8	37.8
CA60	5.0	113.8	17.5
PESO TOTAL (kg)			
CA50	37.8		
CA60	17.5		

Volume de concreto (C-25) = 0.88 m³
Área de forma = 15.56 m²



Relação do aço						
ELEMENTO	AÇO	N	DIAM (mm)	QUANT	C.UNIT (cm)	C.TOTAL (cm)
VP1	CA60	1	5.0	64	49	3136
	CA50	2	8.0	2	844	1688
	CA50	3	8.0	2	860	1720
VP2	CA60	1	5.0	25	49	1225
	CA50	2	8.0	2	315	630
	CA50	3	8.0	2	331	662
VP3	CA60	1	5.0	25	49	1225
	CA50	2	8.0	2	315	630
	CA50	3	8.0	2	331	662

Resumo do aço			
AÇO	DIAM (mm)	C.TOTAL (m)	PESO (kg)
CA50	8.0	60	23.6
CA60	5.0	55.9	8.6
PESO TOTAL (kg)			
CA50	23.6		
CA60	8.6		

Volume de concreto (C-25) = 0.28 m³
Área de forma = 5.91 m²

APROVAÇÃO	
DATA	DISCRIMINAÇÃO DA ATUALIZAÇÃO/ SUBSTITUIÇÃO
<div>  <div> GOVERNO DO ESTADO DO PARANÁ SEIL - SECRETARIA DE INFRAESTRUTURA E LOGÍSTICA PARANÁ EDIFICAÇÕES GERÊNCIA DE PROJETOS </div>  </div>	
PROPRIETÁRIO: MUNICÍPIO DE PÊROLA	MUNICÍPIO: PÊROLA - PR
OBRA: AMPLIAÇÃO UAPSF SILVANILDA RODRIGUES DE SOUZA PUSILDES	ESCRITÓRIO REGIONAL: ESCRITÓRIO REGIONAL DE UMARAMA
LOCAL: RUA ARAÚJO LIMA, Nº 1375, CENTRO - PÊROLA - PR	TIPO: PROJETO DE AMPLIAÇÃO
PROJETO: PROJETO ESTRUTURAL (garagem) REFERÊNCIA: ARMADURA DE VIGAS E PILARES	
AUTOR DO PROJETO / REGISTRO PROF: RENAN DE OLIVEIRA CAMOSSATO ENQº CIVIL CREA-PR 212188/D	
DESENHO: RENAN DE OLIVEIRA CAMOSSATO DATA: 06/2023 ESCALA DO DESENHO: INDICADA ARQUIVO: UBS	
<div>  <div> AC ASSessoria TÉCNICA em ENGENHARIA CIVIL LTDA CNPJ: 08.785.713/0001-10 CREA: 49.054 AV. PIRAPÓ 5538 CEP: 87502-140 ENGENHARIA@ACASSessoriaTECNICA.COM.BR TELEFONE: (41) 3024.7779 </div> </div>	
<div>  </div>	